



## Astro Quilt Installation

To begin, remove the Astro-Quilt from any packaging and place on top of the first two pallets already loaded into the container. Your other option is to place the Astro-Quilt on top of one of the first pallets you load, and move it in with the forklift. Before unfolding, please make sure that the D Rings are facing towards you when you place the quilt on top of the pallet.



Unfold the Astro-Quilt over the two pallets, and then fold up the leading edge of the quilt against the wall. It is critical that you create a good seal separating the air mass on top of the quilt from the cargo underneath it.

From this point, there are two methods for covering the rest of the pallets with the Astro-Quilt. Method number one is called the rope-pull option. This optional rope kit includes two ropes with clips attached. Attach each rope clip to the rings located on the edge of the quilt. Then, use common tape to secure the rope along the side walls of the container a few feet above the top of the pallets until you reach the back doors. If you prefer, you may install the ropes against the side walls of the container prior to loading the first two pallets.



*Rope Kit*



*Connect rope to "D" rings*



*Ropes attached to wall while loading*



Once both ropes are taped all the way back to the exit of the container, continue loading the rest of the pallets into the container. Once fully loaded, simply begin pulling both ropes until the Astro-Quilt reaches all the way back to the final pallets in the container. Detach rope clips from the rings and store the ropes in your facility for the next usage.



*Use ropes to pull the Astro-Quilt all the way out to the final pallets*

Now simply fold the remaining portion of the Astro-Quilt down to the floor sealing the last two pallets of the container and tuck in neatly to avoid air gaps.



---

### Manual Option

Method number two is called the manual option. Instead of pulling the quilt out at once, unfold the quilt a little each time a new set of pallets is loaded into the container.

Regardless of which method you choose for pulling the Astro-Quilt over the pallets to this point, it is important to verify that the side edges of the quilt make a good seal with the sides of the container. You are now ready to close the doors and send the load on its way!







## Astro-Quilt Folding for Shipment

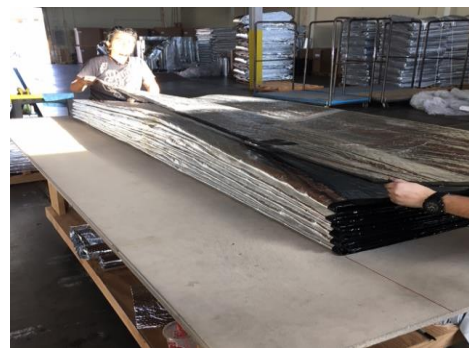
**Begin folding on the end of the quilt that does not have D-Rings. If your quilts do not have D-rings, you may begin folding from either side.**



**Since the Astro-Quilt has memory in the material from the first time it was folded during manufacturing, you may now start folding the quilt as shown, leaving a 2' section of material exposed at the leading edge.**



**Continue folding the quilt at the creases in the material that occur at approximately 43" intervals. Once you reach the last section, fold the side with the D rings back toward the tail edge of the quilt as shown below.**





**Now fold the leading section back over the rest of the quilt.**



**You may now fold the Astro-Quilt in half and place it on a pallet for shipment.**





**You may fit as many as 10 Astro-Quilts on one 48" x 48" pallet. In addition, this folding method prepares the quilt for easy installation on the next shipment.**



Astro-Cooler Products, 8333 Demetre Ave, Sacramento, CA 95828

(800) 442-3645 • (916) 381-3325 • (916) 381-1575 Fax

[www.astrocooler.com](http://www.astrocooler.com) / [info@astrocooler.com](mailto:info@astrocooler.com)